

Sealed Transmissive Microfocus X-Ray Source G-511 Series



X-ray source for industrial non-destructive inspection capable of high speed imaging with high resolution

Sealed Transmissive Microfocus X-Ray Source G-511 Series

- ✓ High resolution : 2 μ m (at 6W)
- ✓ High magnification : FOD 0.29 mm
- ✓ Wide beam angle : 168° cone

CE

RoHS



Standard Holder Type G-511VL-D

■ FEATURES

1. 110kV voltage ramp time within 1sec.
 - Quick image acquisition
2. Target maintenance free
 - Target rotation not required
 - Improving equipment operation ratio
3. Warming-up within 3 min.
 - Solution of the long waiting time at starting up X-ray equipment
 - Not required for tube aging after long term storage
4. Self diagnosis of X-ray tube life time
 - Scheduled maintenance of X-ray equipment
5. CE and RoHSII compliant

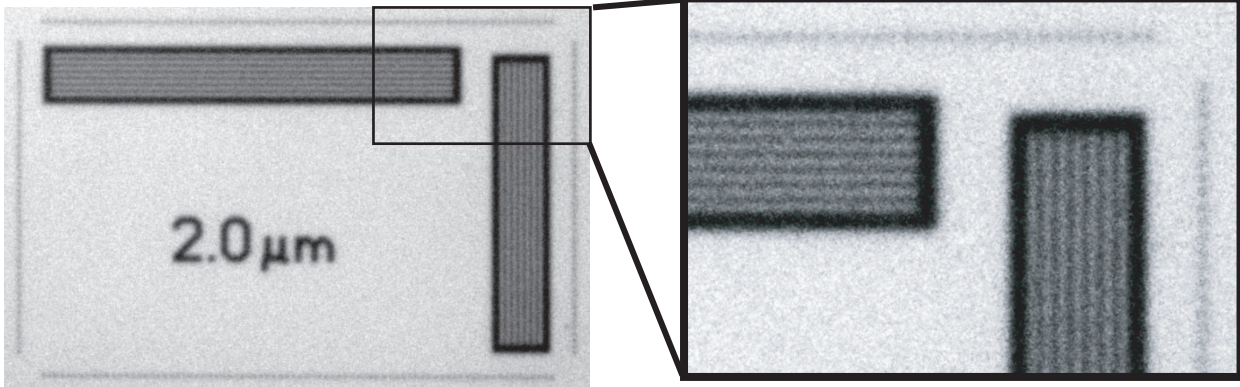


(option : Long Holder Type) G-511VL-DL

■ SPECIFICATIONS

Parameter	Unit	G-511VL-D(L)
Tube Voltage Operational Range	kV	40 – 110
Tube Current Operational Range (Target Current)	μ A	10 – 100
Maximum Output	W	10
Minimum Resolution (JIMA RT RC-02B)	μ m	2
X-ray Window Material / thickness	– /mm	C(Diamond) / 0.29
Target Material	–	W(Tungsten)
X-ray Beam Angle	Deg.	168(Max.), 80(80% , Equidistance)
Weight	kg	21(G-511VL-D) , 24(G-511VL-DL)
Operation	–	Continuous, Pulse (\geq 1sec)
External Control	–	RS-232C
Input Voltage(DC)	V	24 (+1.2, -1.2)
Maximum Power Consumption	W	40
Operational Ambient Temperature	$^{\circ}$ C	10 – 45
Storage Temperature	$^{\circ}$ C	0 – 50
Operational and Storage Humidity	%	\leq 85(No Condensation)
High Voltage Power Supply	–	Built-in

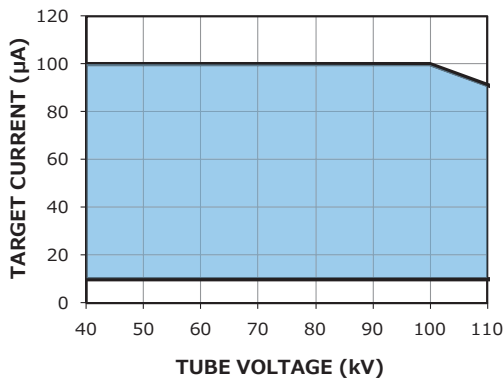
● MICRO CHART IMAGE (JIMA RT RC-02B)



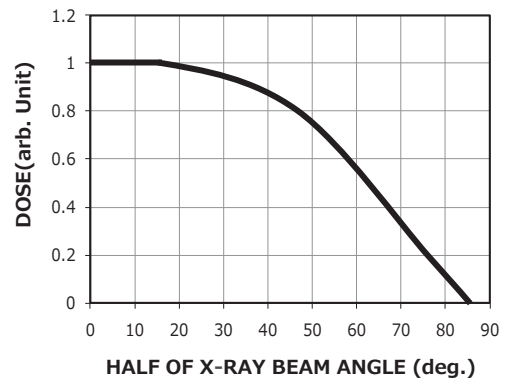
100kV 60μA

(260x)

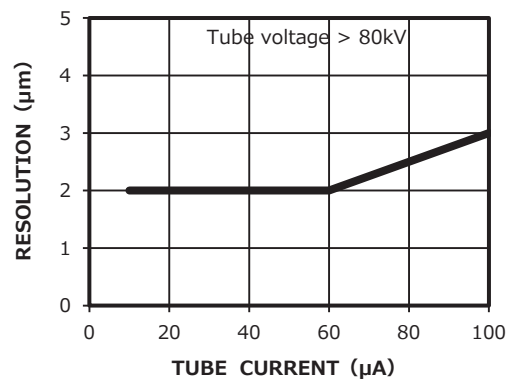
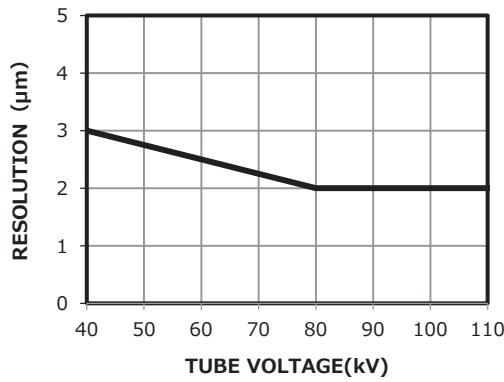
● TUBE CURRENT OPERATIONAL RANGE



● X-RAY DOSE UNIFORMITY



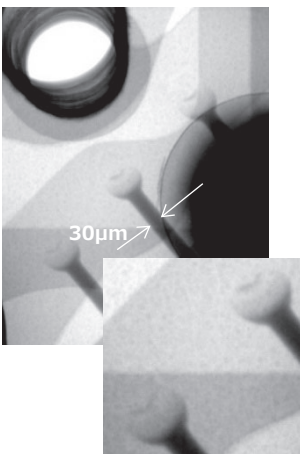
● FOCUS CHARACTERISTICS



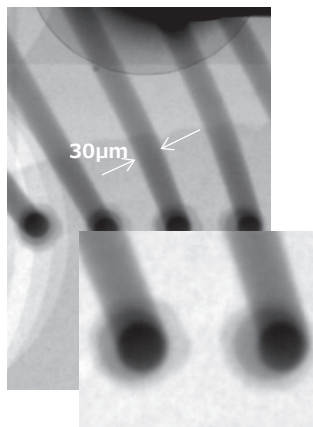
* The figures showed in each graph are typical values.

■ IMAGE EXAMPLES

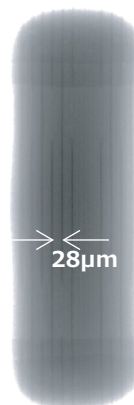
Bonding wire



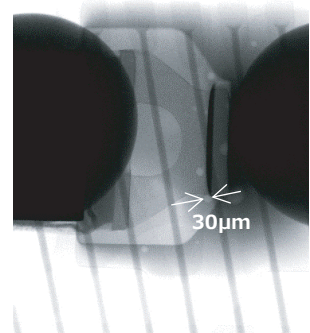
Bonding wire



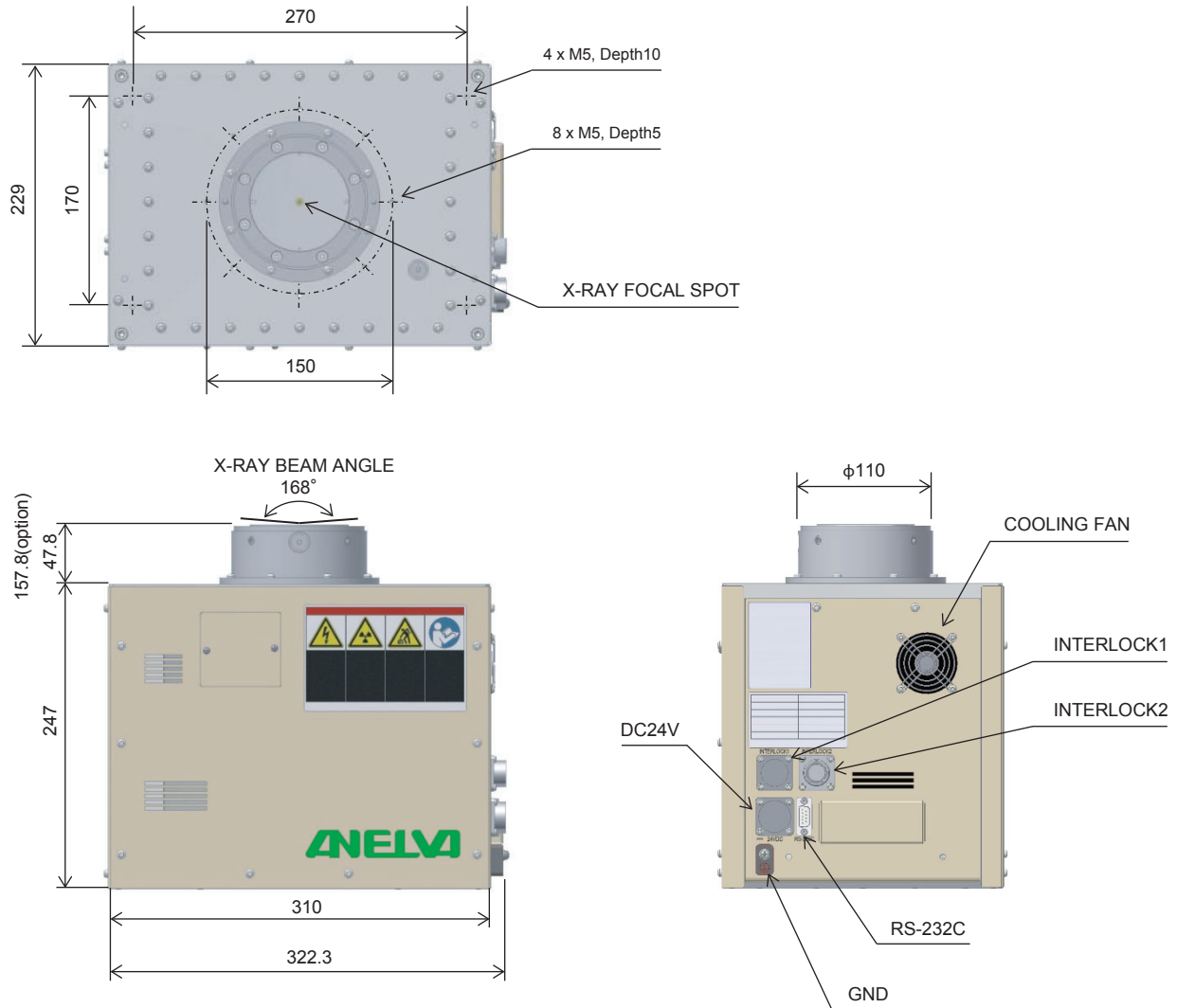
Multi Layer Ceramic Capacitor



Void



■ DIMENSIONAL OUTLINE (Unit:mm)



Installation side :Top(exposure port side) and Bottom

CAUTION The X-ray sources introduced in this material generate X-rays. To be used by qualified personnel only. Safe use is the responsibility of the operator.

NOTICE : The X-ray sources introduced in this material were developed specifically for industrial use and can not be used for food and drinks or medical applications. Since the X-ray sources introduced in this material are subject to local laws and regulations, what you are required to use may vary from region to region. Please consult with our sales representative.

February 2019

Canon CANON ANELVA CORPORATION

Component Sales Dept. of Head Office

5-1 Kurigi 2-chome, Asao-ku, Kawasaki-shi, Kanagawa 215-8550, Japan

Canon U.S.A., Inc

3300 North First Street San Jose, CA 95134, U.S.A.

Canon Europa N.V.

Bovenkerkerweg 59, 1185 XB Amstelveen, The Netherlands

Canon Semiconductor Engineering Korea, Inc.

Canon BS Tower 11F, 607, Teheran-ro, Gangnam-gu, Seoul, 06173, Korea

Canon Semiconductor Equipment Taiwan, Inc.

9F, No.25, Pu-Ding Road, Hsinchu, 300, Taiwan

Canon Singapore Pte. Ltd. Anelva Products Department

1 Fusionopolis Place #15-10, Galaxis Singapore 138522

Canon Optical Industrial Equipment (Shanghai) Inc.

18F, Urban City Center, No.45 Nanchang Road Shanghai 200020, China

Canon ANELVA Corporation is constantly improving its products, hence specifications are subject to change without notice.

TEL : +81-44-980-3503 FAX : +81-44-986-4038

TEL : +1-408-468-2000 FAX : +1-408-468-2343

TEL : +31-20-545-8545 FAX : +31-20-545-8222

TEL : +82-2-6445-0013 FAX : +82-2-6445-0069

TEL : +886-3-668-6600 FAX : +886-3-668-6969

TEL : +65-6799-8888 FAX : +65-6271-4226

TEL : +86-21-2316-3200 FAX : +86-21-2316-3222

<http://www.canon-anelva.co.jp/english>